

Northwest Corner of Cruickshank ^{Cut} 210-75

Taylor barometer Carved
with John Michelotti & Erwin Karl

10/19/16

FFIS (1)

site	p	Δp	Δe	e calc	emap	time	R
(A) Todd Mtn. Rd. Summit	28.90	1.13	1139	2439	2460		(R1)
(B) John's	30.03	0.00	$P_1 = 1.008$	-	1300	9:05 AM	(B) to (D)
(C) Cousin Robert's	29.98	0.05	50	1350	1350	10:00 AM	(E) to (D)
(D) new Cabinet Platt's	29.16	0.87	877	2177 ✓	2177 USGS	10:52	(E) to (D)
(E) 4 corners, 1st rod	28.98	1.05	1058	2358	from surveys 2375	11:18	(E) to (D)
(F) 2nd rod	28.94	1.09	1099	2399	from surveys 2410	11:35	(E) to (D)
(G) top 1st ledge	28.79	1.24	1250	2550		11:56	(E) to (D)
(H) top 2nd ledge, on blaze	28.77	1.26	1270	2570		12:07	(E) to (D)
(I) up 3rd patch, ^{diverge} from blaze	28.70	1.33	1341	2641	Lunch	12:20 to 12:40	(E) to (D)
(J) Tum SW	28.63	1.40	1411	2711		12:52	(E) to (D)
(K) 3rd ledge boulder	28.50	1.53	1542	2842		1:15	(E) to (D)
(L) NW Corner	28.39	1.64	1653	2953		1:25 arr	(E) to (D)
(M) Tum down to SE	28.41	1.54	1571	2871		2:10	(E) to (D)
(N) on SNK (Great Lots 7&8)	28.48	1.47	1499	2799		2:20	(E) to (D)
(O) Staircase Rock	28.64	1.31	1336	2636	APRIL 2016 CALC 2700	2:47	(E) to (D)
(P) Tyler Cabin	28.79	1.16	1183	2483 ✓	2483 USGS	3:09 to 3:25	(E) to (D)
(Q) 2 trunk BC	28.82	1.13	1153	2453		3:34	(E) to (D)
(R) Upper stone wall	28.84	1.11	1132	2432		3:45	(E) to (D)
(S) ^{OAK} chestnut log? ^{OAK} abun.	29.16	0.79	806	2106		4:15	(E) to (D)
(T) bitternut common	29.56	0.39	398	1698		4:57	(E) to (D)
(C) Robert's	29.89	0.06	61	1361	1350	5:34	(E) to (D)
(B) John's	29.95	0.00	$P_2 = 1.020$		1300		(E) to (D)
(A) Todd Mtn. Rd. Summit	28.83	1.12	1142	2442	2460		(E) to (D)

$$\frac{30.03 - 29.16}{0.87} = \frac{877}{1.008}$$

$$\frac{2483 - 1300}{29.95 - 28.79} = \frac{1183}{1.16}$$

$$\frac{1183}{1.16} = 1.020$$

*e-p# about 36 ft below (D) from 4/13/16, or 2600'

Vegetation

210 - 76

D) 2177 CARPINUS along road near new cabin. Erwin looked at electrical gear & thinks Cabin dates to 1970s. Platt Farm

D) to E) 2nd ledge along blaze is in hemlocks.

F) to G) Why are there blue numbered tags on a few trees? #43 on a SUB and #2 on a hemlock? USFS? Dense MO thicket 4" to 6" to right (on D.A. lands?)

G) 2550 No thicket here atop 1st ledge. Stumps below 30 to 40y. Few hemlock On Chickshank lands.

H) 2570 2nd ledge top. James thickets to SW. On D.A. lands blaze which had been lost below. No more stumps on D.A. Lands.

e.p.# 699

I) 2641 Up 3rd pitch begin diverging W from blaze. Lunch stop.

Leveling cut to W, one HEM & SUBS to 24". Stumps 25y?

J) 2711 Turn SW to follow thicket edge. Few older

stumps scattered beyond the clearcut. 20" BASS

View through trees to E spur of Balsam Mtn. above.

Turn W temporarily again to follow thicket, here MO.

K) 2842 Ledges & boulders to NW. Old SUBS stumps on SW.

L) 2922 e.p.# 700

The NW corner of the thicket (finally!) Turn S along the edge of it.

This corner had been searched for for 3 years & found! Flora: SRUG, AA, RS, SLAT, GALTRIFL.

PBT SUBS to 24" 10 on steep ledge, bouldery slope above. HYDR, TR, EUP, DP, ASTER CORP, PA

Not difficult going along edge of 2004 cut thicket except for one open spot where James pushed up a little higher & RAs were crossed, maybe 50 ft. On skid

road heading South. Forest SUB-dominated here

Flora quite rich.

Re-enter woods.

M) 2871 Thicket begins to turn S & SE & descends below

CX PLANT, D GOLD ADIANA (snack stop). Unlogged. 1st SUB to S & SW

N) 2799 On SNY blaze along Great Ledge 7th. 2nd sta. for D GOLD. Also ADIANUM

O) 2636 ASH common on terrace just below Staircase Rock. e.p.# 688 at ca. 2600 on SNY.

P) 2483 2 pups of ADIANUM at Tyler Cabin & a sapling butternut in cellar hole. OSMO. To double-trunked big BC N70E magnetic.

Q) 2432 Mature PB down. Must have followed 1977 logging along with BILSTON.

R) Log road fork 3-52; bushwhack 4-00 OAK stump 4-08 } Beach

S) Cross blaze 4-08 } dom. NO CHERRY ?? log 4-15

T) 2106 OAK COLLECTED below 20' ledge

Continued. B-SUL-OAK-BITTOOTH. OAK increasingly dominant as one descends on a terrace. Then steeply down to E, relentlessly on OAK & SUL litter slippery.

① 1698 1st BITTERNIT obs. ca-100' above this point, but becoming common below.

① OAK dom. One Vacer.

Reach flood plain where farm road enters woods at N end of big field. 5:20

SHAMORE with EWING PINE & YEMLOCK, P.B. BITTERNIT just S of house ①.

Note from 7/5/15 hike (pp. 210-48 to 51) from site ① 3156' we could not see the Chickshank cut for 2 reasons:

- ① forest very thick and
- ② the cut was on the other (NE) side of the Great Lot 7+8 blaze, not directly below us on Lot 7.

e-p #673A, then it is incorrect. Delete. It is e-p #689 at 2771'

Entry point adjustments

210-77

#699

New e-p on 10/19/16 within the D.A. ^{Center} Tract. Stumps below & no stumps above. Site ① at 2570'. Apparently, only the lower (SE) had been lightly logged.

#673

This e-p dates from the 9/26/14 hike, pp. 202-82 to 84, sites ① at 2750' and ② at 2719'. Bill Binst & Mike crossed out of D.A. Center tract (1°) and into Chickshank 2004 cut (2°) above, and back into D.A. Tract.
 down

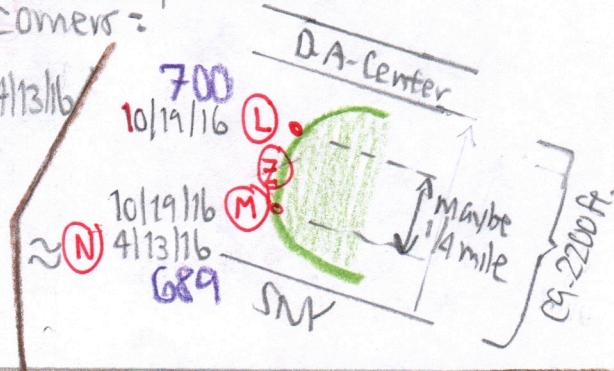
#700

New e-p on 10/19/16 at the NW corner of the 2004 Chickshank logging. Site ① at 2922'.

#689

Site ① elev 2888' of 4/13/16 (pp. 210-67 to 70) is really not that far at all from #700. When viewed ^{in April 2016} north from ①, thickets & stumps climb about 50 ft higher than ① and disappear over a low ridge. This "low ridge" is marked ② on this 10/19/16 hike. The distance from ① to ③ is short, nowhere near the full ±2300 ft on Lot 34 because the 2004 Chickshank cut boundary is curved instead of with sharp corners:

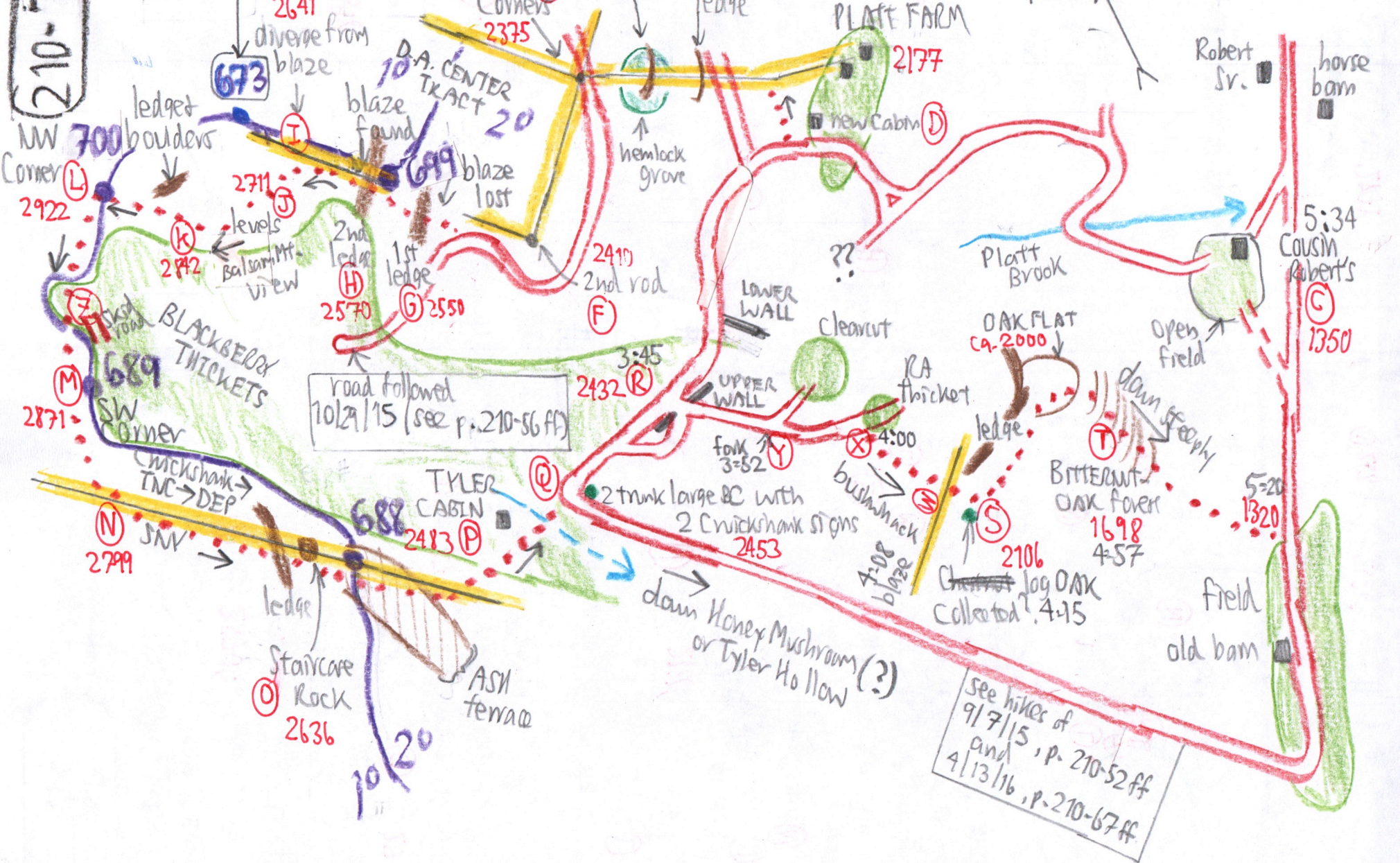
#689 ① of 4/13/16 is very close to the site ③ of 10/19/16.



#688 of 4/13/16 is just below Staircase Rock, on the broad ASH-dominated terrace. If Staircase Rock ① is at 2636' then #688 is about 2600', not 2700'

210-78

see hike of 9/26/14
p. 202-82 ff



road followed
10/21/15 (see p. 210-56 ff)

see hikes of
9/7/15 , p. 210-52 ff
and
4/13/16 , p. 210-67 ff

NW 700b
Corner (L)
2922

673

2641

diverge from
blaze

D.A. CENTER
TRACT 20

1st rod at
Four
Corners (E)
2375

ledge

ledge

PLATE FARM
2177

new Cabin (D)

Approx N.

Robert Sr.
horse barn

blaze found

blaze lost

hemlock
grove

2711 (J)

levels
Balsam Mt.
view

2nd ledge (H)

2570

1st ledge (G)

2550

2410

2nd rod (F)

LOWER
WALL

clearcut

OAK FLAT
ca. 2000

Open
field

5:34

Cousin
Robert's (C)

1350

BLACKBERRY
THICKETS

689 (M)

SW
corner

chickshank
TMC → DEP

road followed
10/21/15 (see p. 210-56 ff)

TYLER
CABIN

2483 (P)

3:45

2432 (R)

fork (Y)
3:52

4:00

bushwhack

4:08

blaze

2 trunk large BC with
2 chickshank signs
2453

ledge

BITTERW
OAK forest

1698

4:57

5:20

1320

field
old barn

Staircase
Rock (O)
2636

ASH
terrace

down Honey Mushroom
or Tyler Hollow (?)

2106 (S)
Chickshank log OAK
collected 4:45